

BRAGA
R A N C H

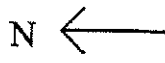
Conventional Maps

ASA Farms Home Ranch (Organic)

Braga Ranch Home Ranch
 Location 1
 510 acres

Section 17
 Township 17s
 Range 6E
 Meridian M

96 11 ac	95 11 ac	94 11 ac
93 12 ac	92 12 ac	91 12 ac



ASA Farms Home Ranch (Organic)

O
P
e
n

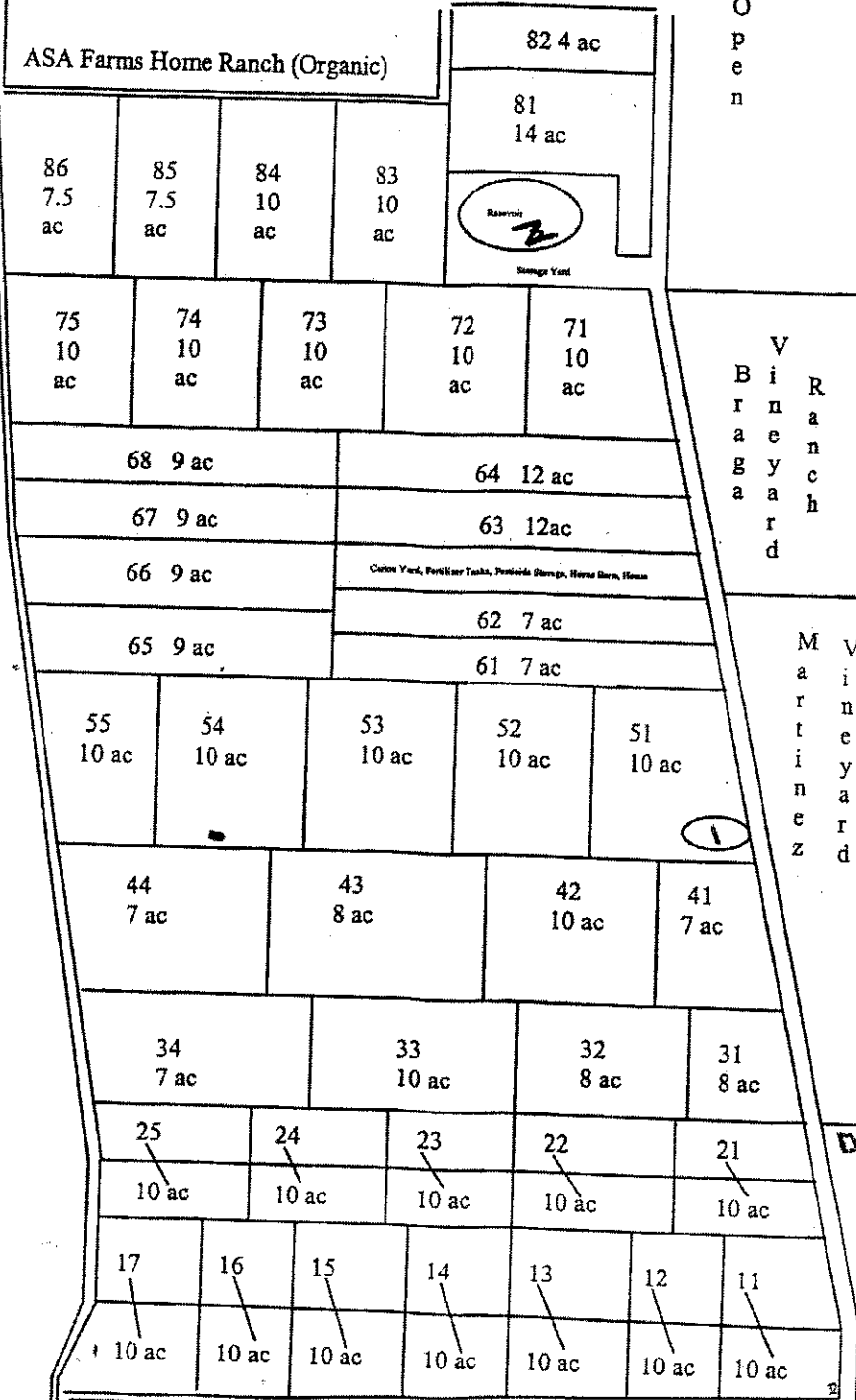
Gardoni Farms

G
a
r
d
o
n
i

F
a
r
m
s

S
i
l
v
a

F
a
r
m
s



V
B
r
a
g
a
r
a
n
c
h

M
V
a
r
t
i
n
e
r
d

well 3

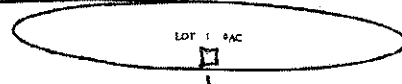
M
B
o
r
r
a
n
n
d
c
a
h

well 2

well 4

Houses Shop Office

Highway 101



Braga Home Ranch Distribution System

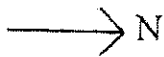
Source	Feeds Blocks	Distribution System #
Well 1	11-17, 21-25, 31-34, 41-44, 51-55	1
Well 2	11-17, 21-25, 31-34, 41-44, 51-55	1
Reservoir 1	11-17, 21-25, 31-34, 41-44, 51-55	1
Well 3	61-68, 71-75, 81-86, All Vineyard Ranch	2
Reservoir 2	61-68, 71-75, 81-86, All Vineyard Ranch	2
Well 4	89-96, 101-103, 110-122	3
Reservoir 3	89-96, 101-103, 110-122	3
Reservoir 4	89-96, 101-103, 110-122	3
Reservoir 5	119-122	4

well 1 → 20-29

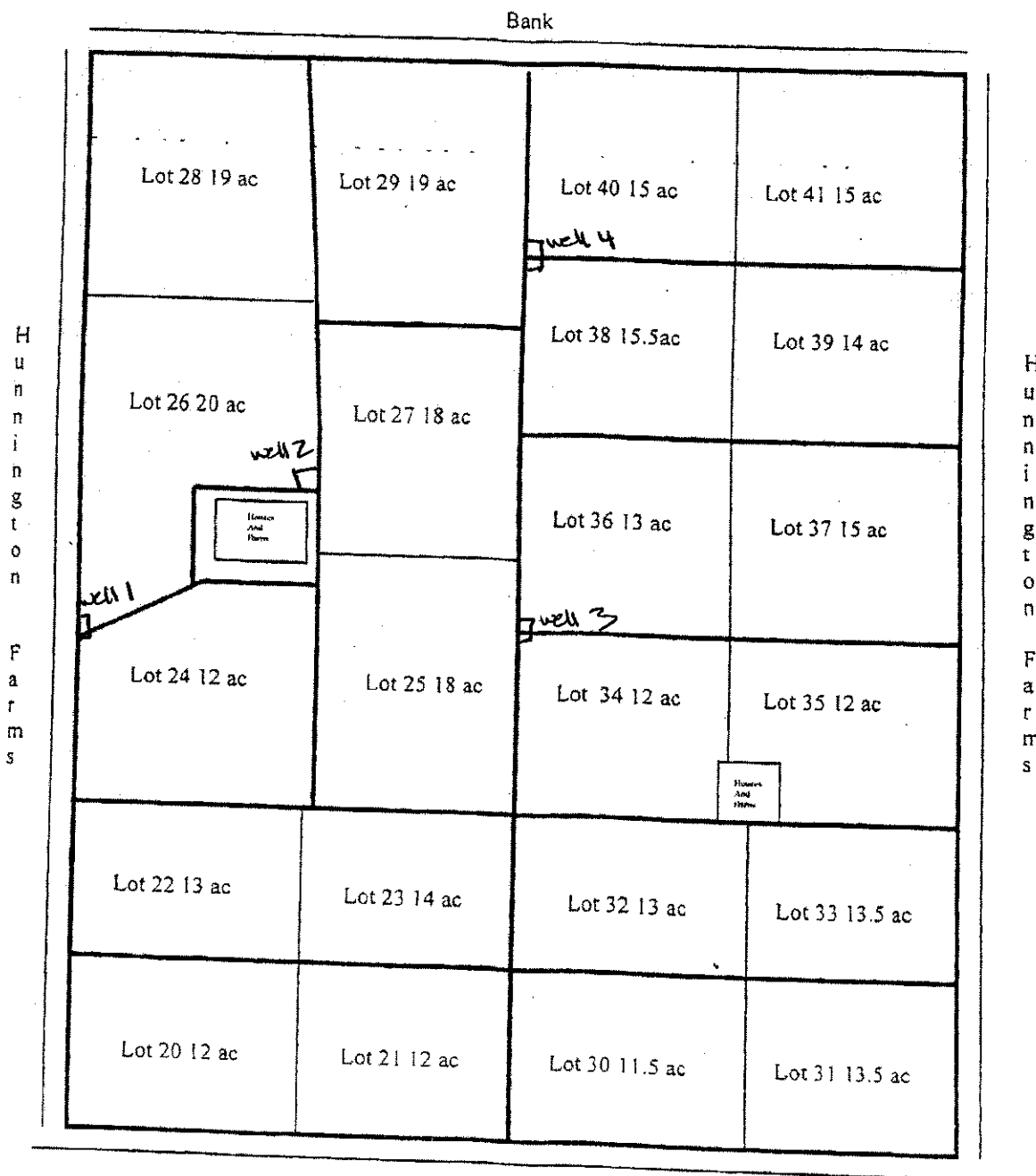
well 2 → AU

well 3 → AU

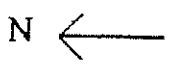
well 4 → 38-41



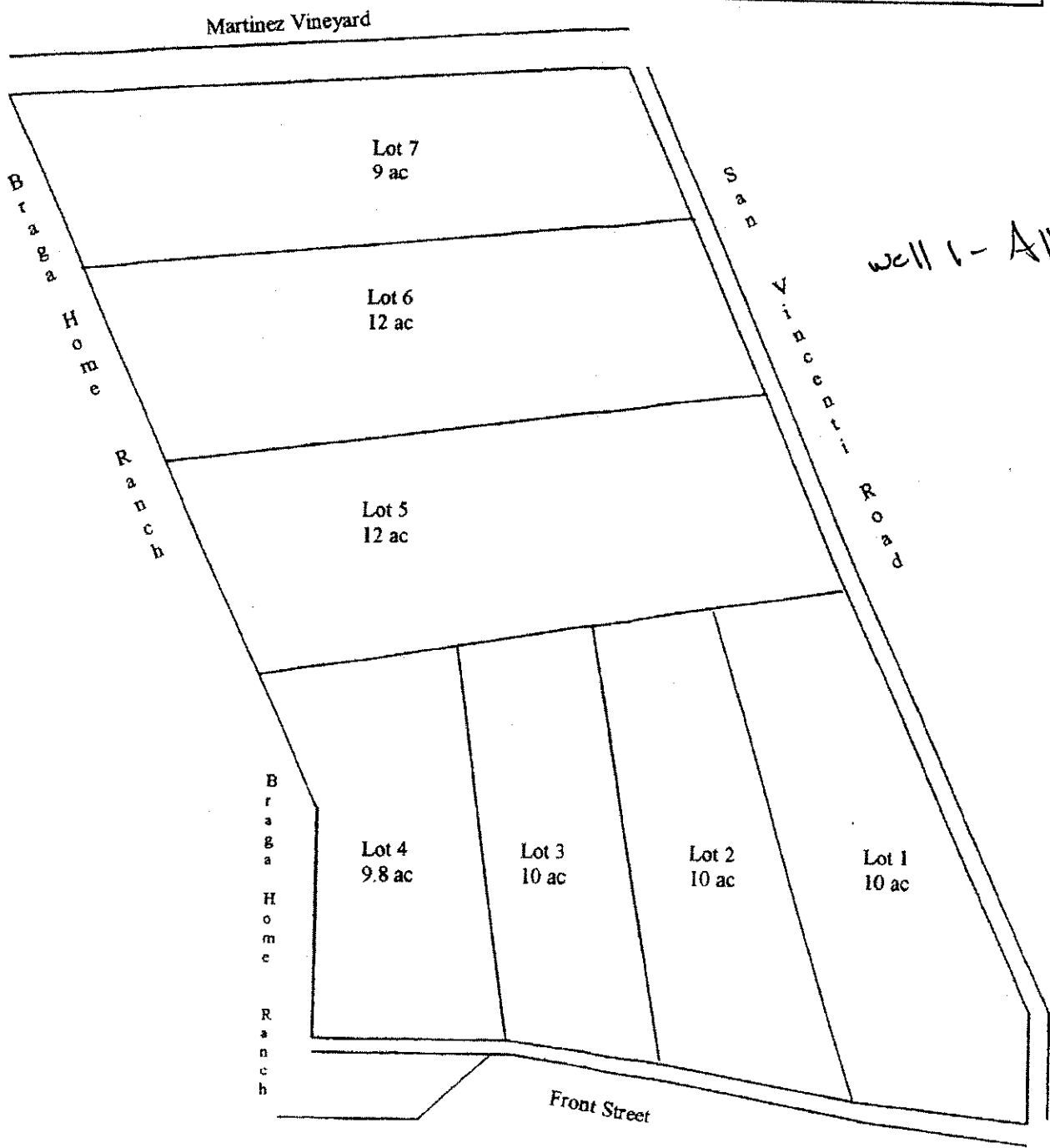
Braga Ranch	Section	19
Gularte Ranch	Township	17s
Location 5	Range	06e
321.5 Acres	Meridian	M



Highway 101



Braga Ranch	Section	20
Moranda Ranch	Township	17s
Location 3	Range	6E
72.8 acres	Meridian	M



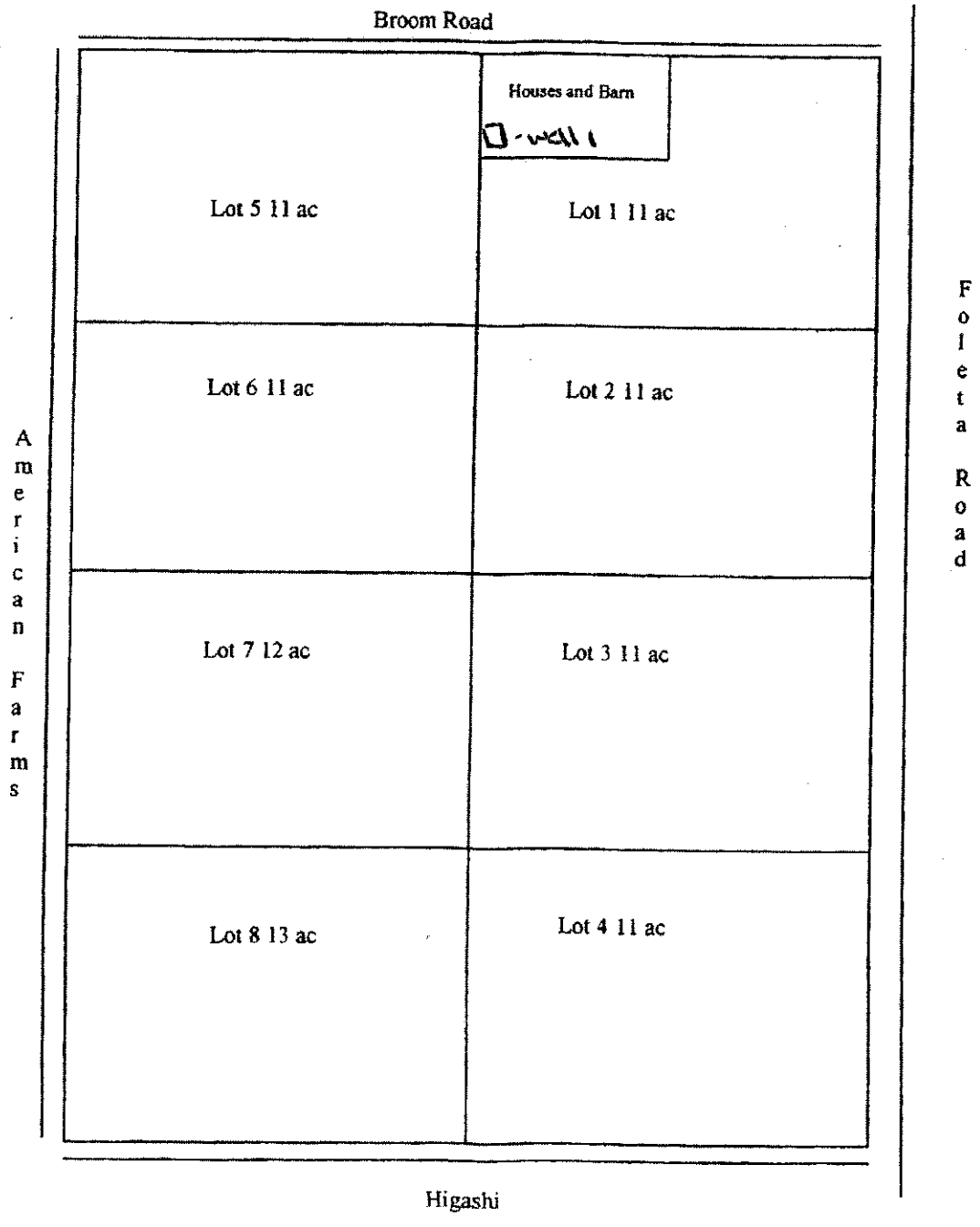
well 1 - All

H
o
u
s
e
s
□ - well 1

well 1 - All

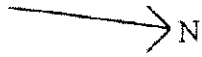


Braga Ranch	Section	11
Mathews Ranch	Township	16s
Location 2	Range	4E
91 acres	Meridian	M



well 1 - All
Res 1 - All

well 2 - All



Braga Ranch
Kelly Ranch
Location 8
278 Acres

Section 10
Township 19s
Range 07e
Meridian M

Reservoir	Lot 20 14 ac.	Lot 19 14 ac.	Lot 18 14 ac.	Lot 17 14 ac.	
	Lot 16 14 ac.	Lot 15 14 ac.	Lot 14 14 ac.	Lot 13 14 ac.	
	Lot 12 14 ac.	Lot 11 14 ac.	Lot 10 14 ac.	Lot 9 14 ac.	
	Lot 8 14 ac.	Lot 7 14 ac.	Lot 6 14 ac.	Lot 5 14 ac.	
well 1	Lot 4 14 ac.	Lot 3 14 ac.	Lot 12 13 ac.	Lot 1 13 ac.	Ponds
	Ponds	Buildings			

L
a
g
o
r
a
r
s
i
n
o
R
d

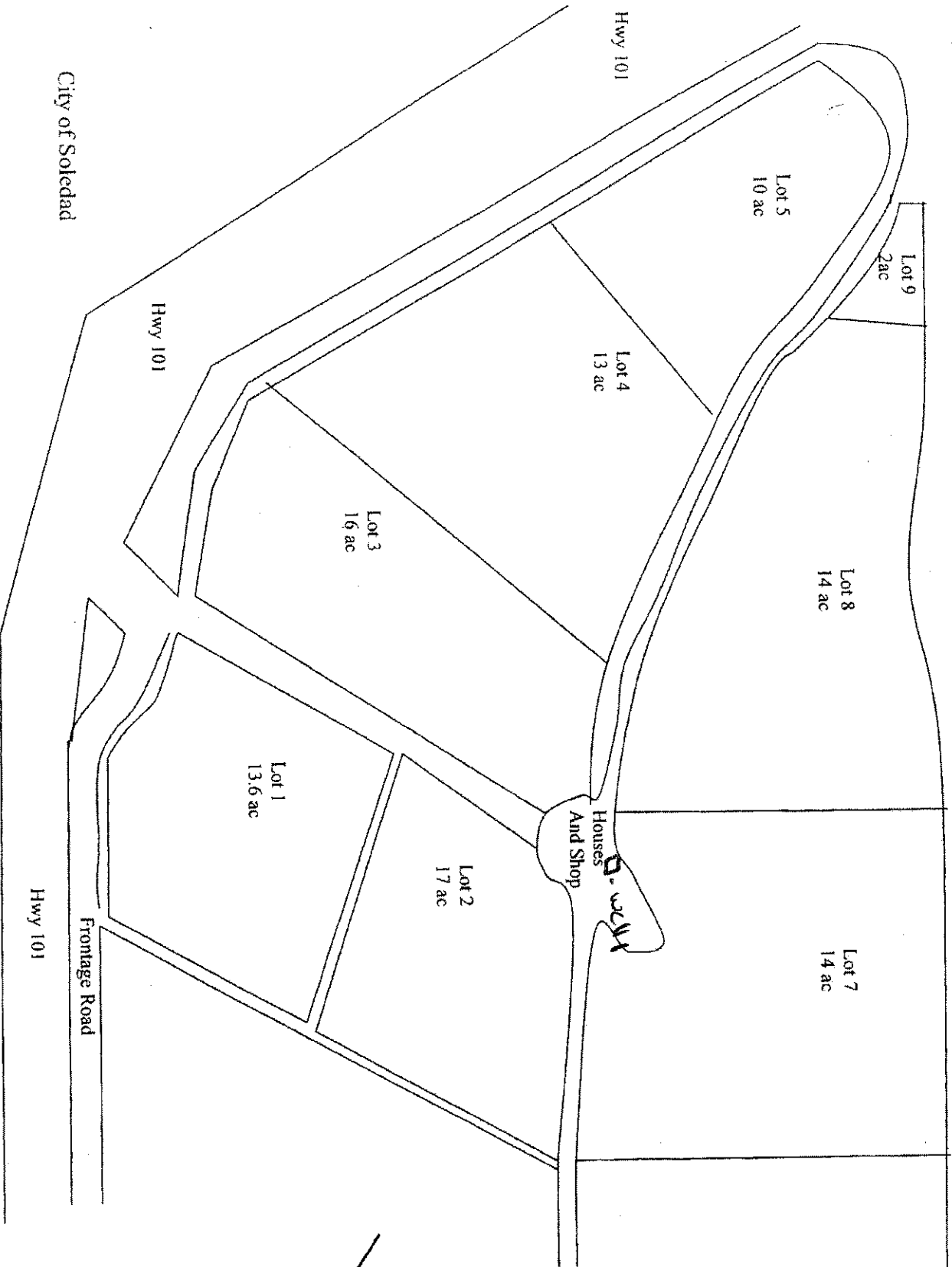
Well 2

Salinas River

Braga Ranch
Bassetti Ranch
Location 2
111.6 Acres

Section 33
Township 17s
Range 06e
Meridian M

well 1 - All

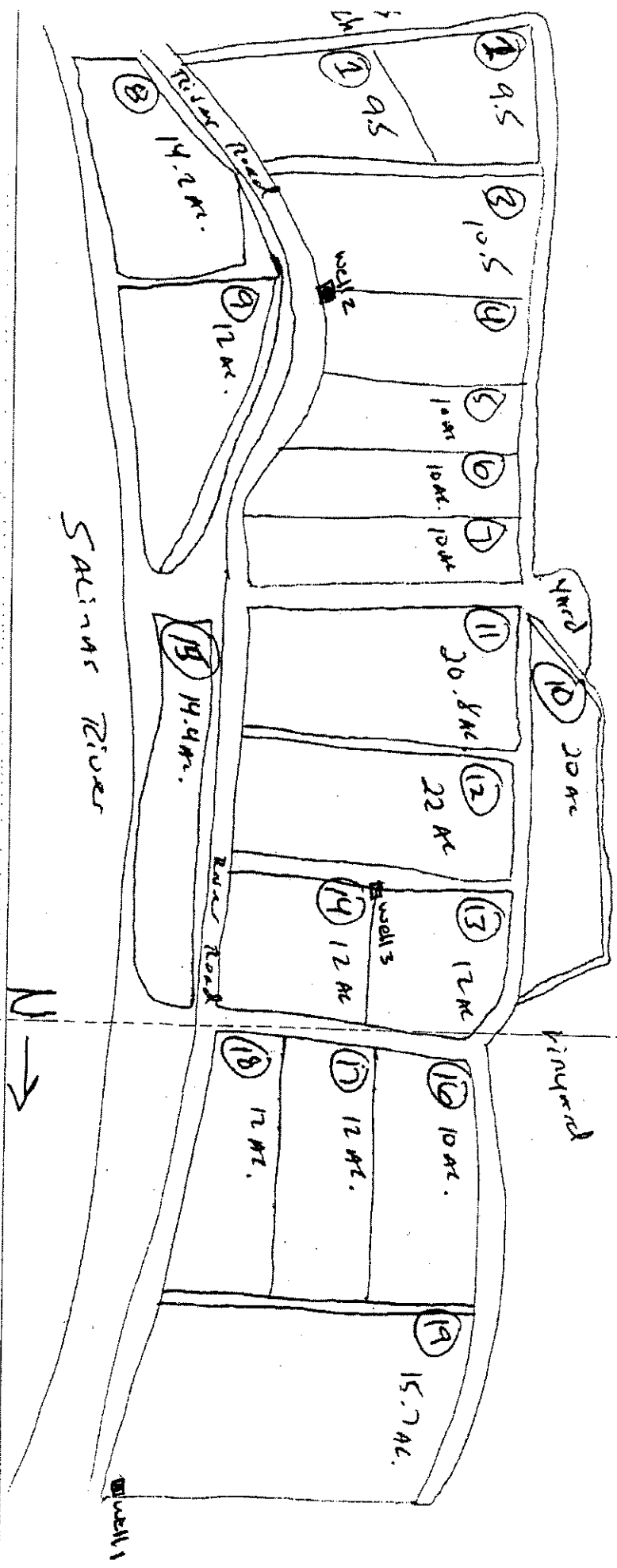


City of Soledad

N

Hills

Serpenti Ranch



well 1 → 16-19 + Ryan # 1
 & 10, 11, 12, 13, 14, 15 if need extra

well 2 → 1-9

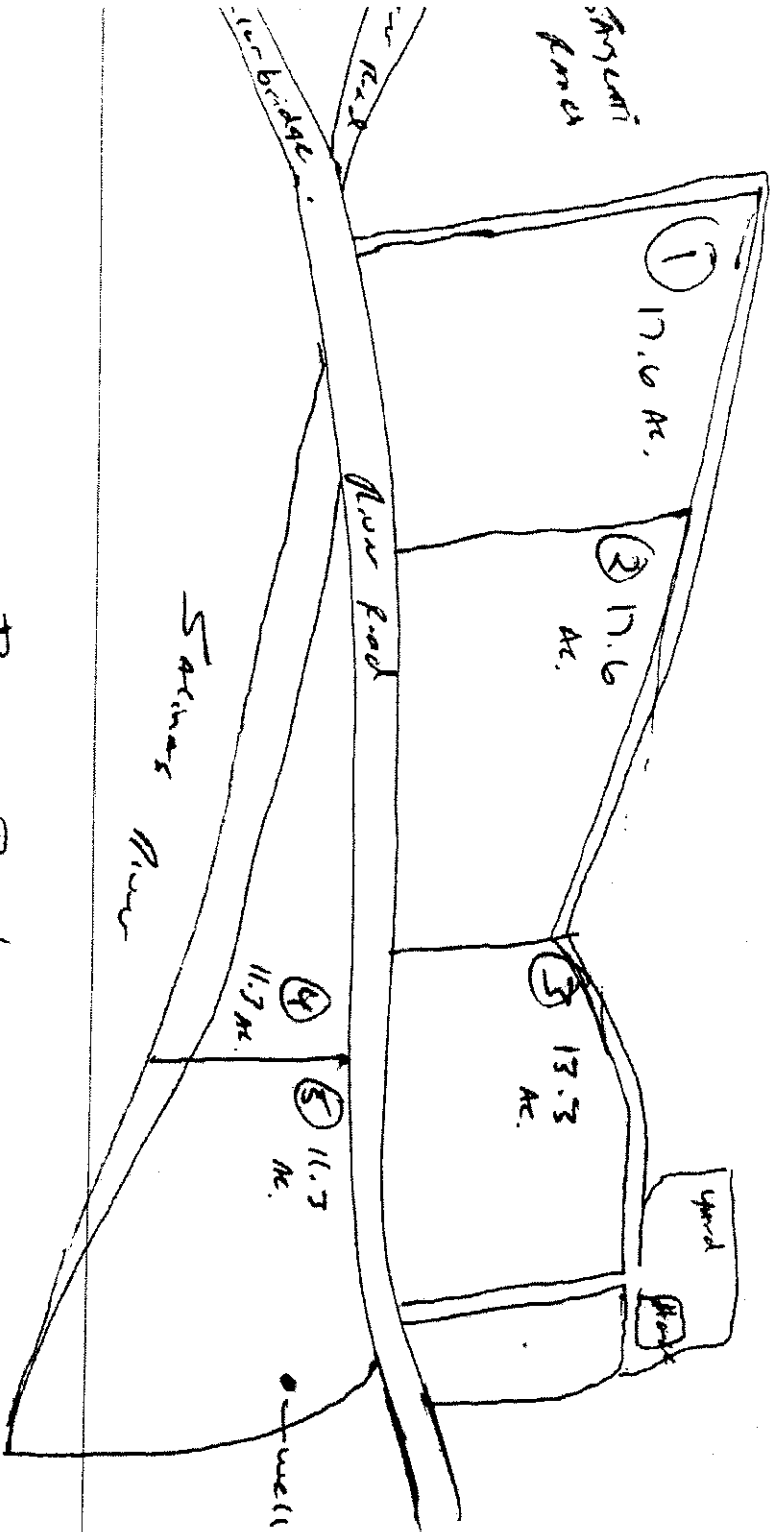
well 3 → 10-15 +

16-18 if need extra

Tringa Ranch
 Serpenti Ranch
 Co. 27

Sec. 17
 Twp 16S
 R. 04E

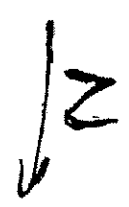
Ryan Ranch



Hills

Parker Ranch

well 1 - All



Breed Ranch

Parker Ranch

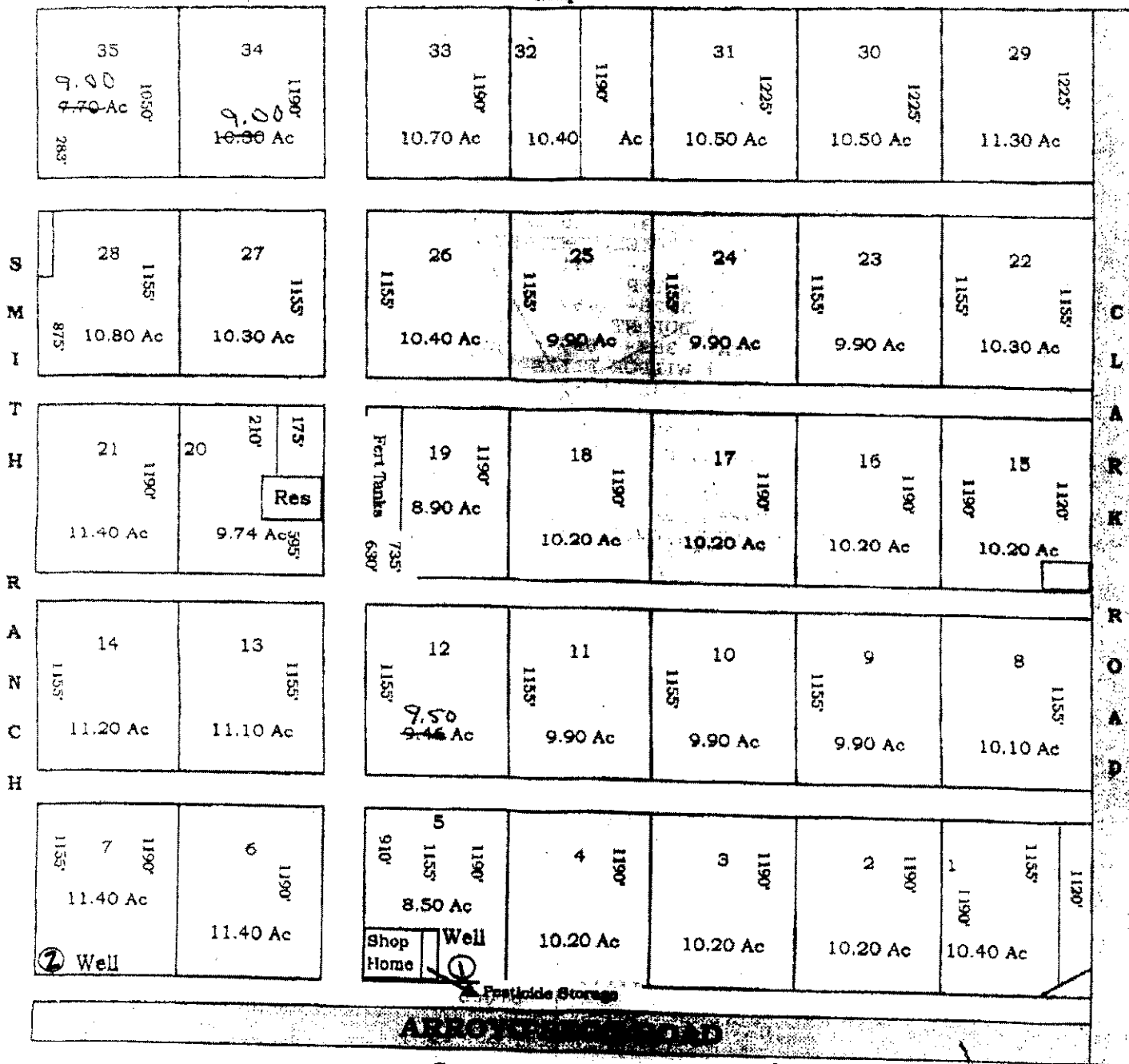
Co. 27
S. 8
T. 16S
R. 24E

Latasa Ranch - #1

357.60 Acres

Township: 18S
Range: 6E
Meridian M
2002

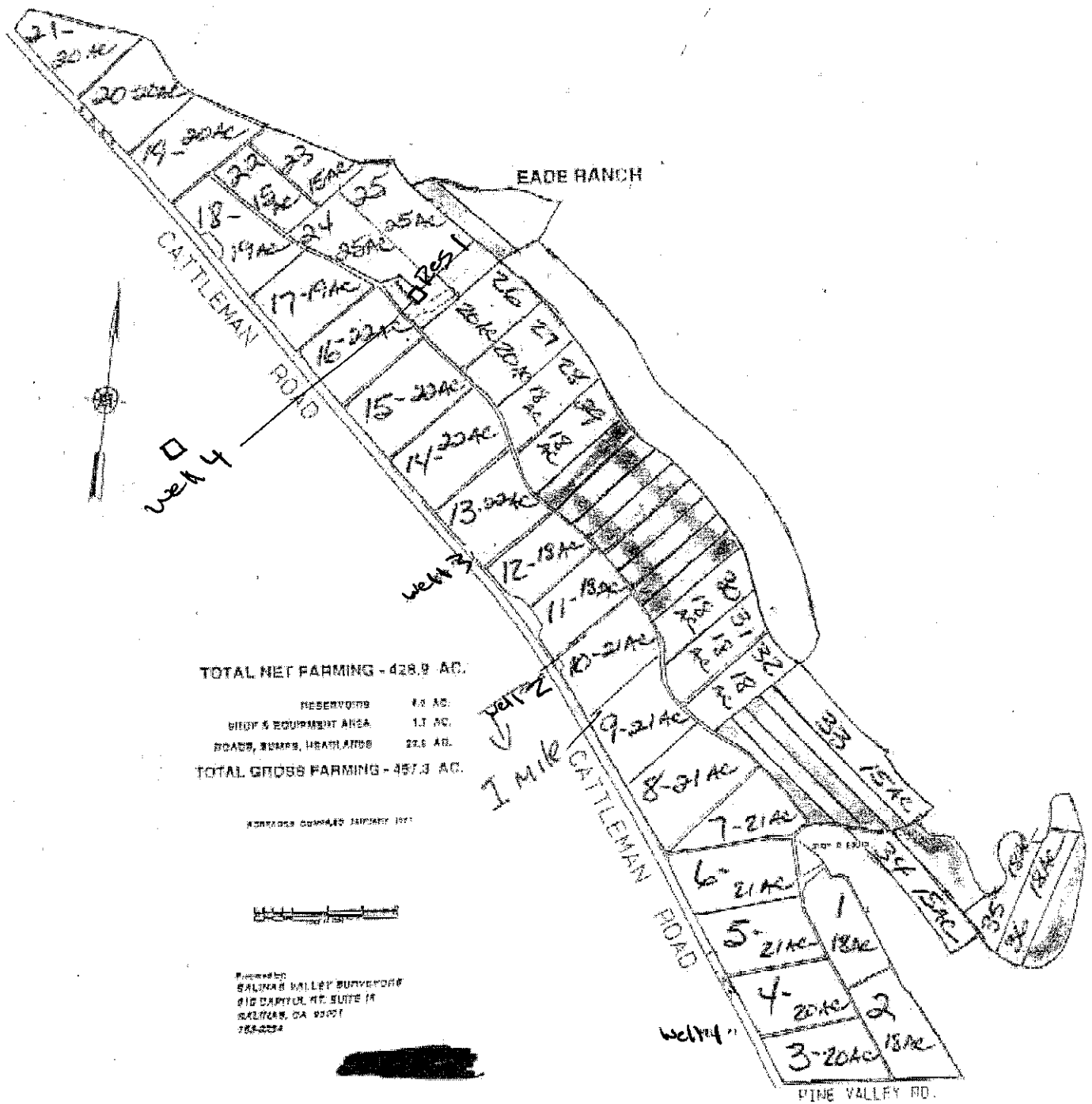
Grapes



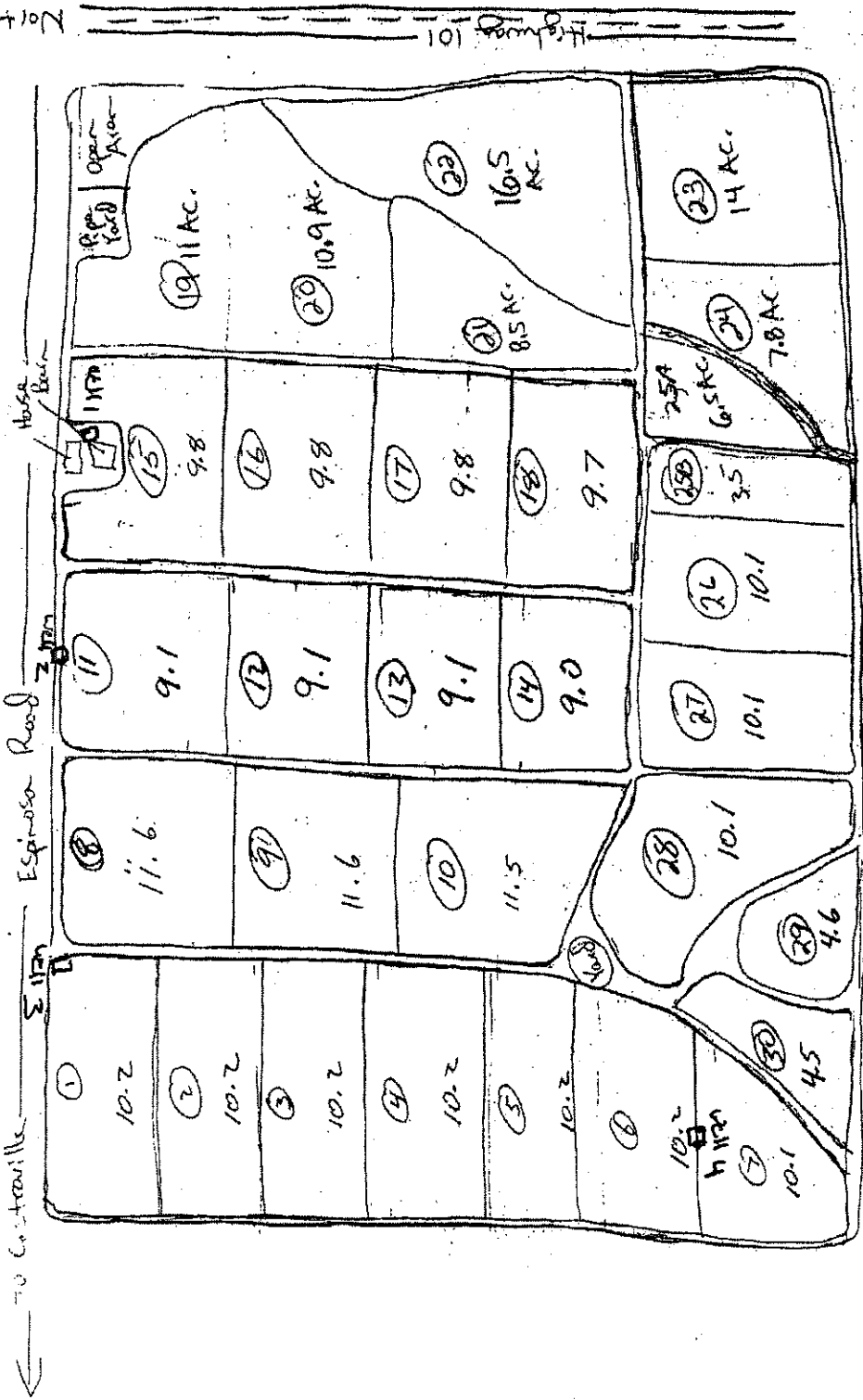
Grapes - AH Clark Ranch

Well 1 - AH
Well 2 - AH
Res 1 - AH





- Well 1 → 1-16, 26-36
- Well 2 → 7-16, 26-33
- Well 3 → 17-25
- Well 4 → 7-25
- Res 1 → 7-25



Total Acres - 299.5

SUPERIOR FARMING LLC
JARVIS RANCH

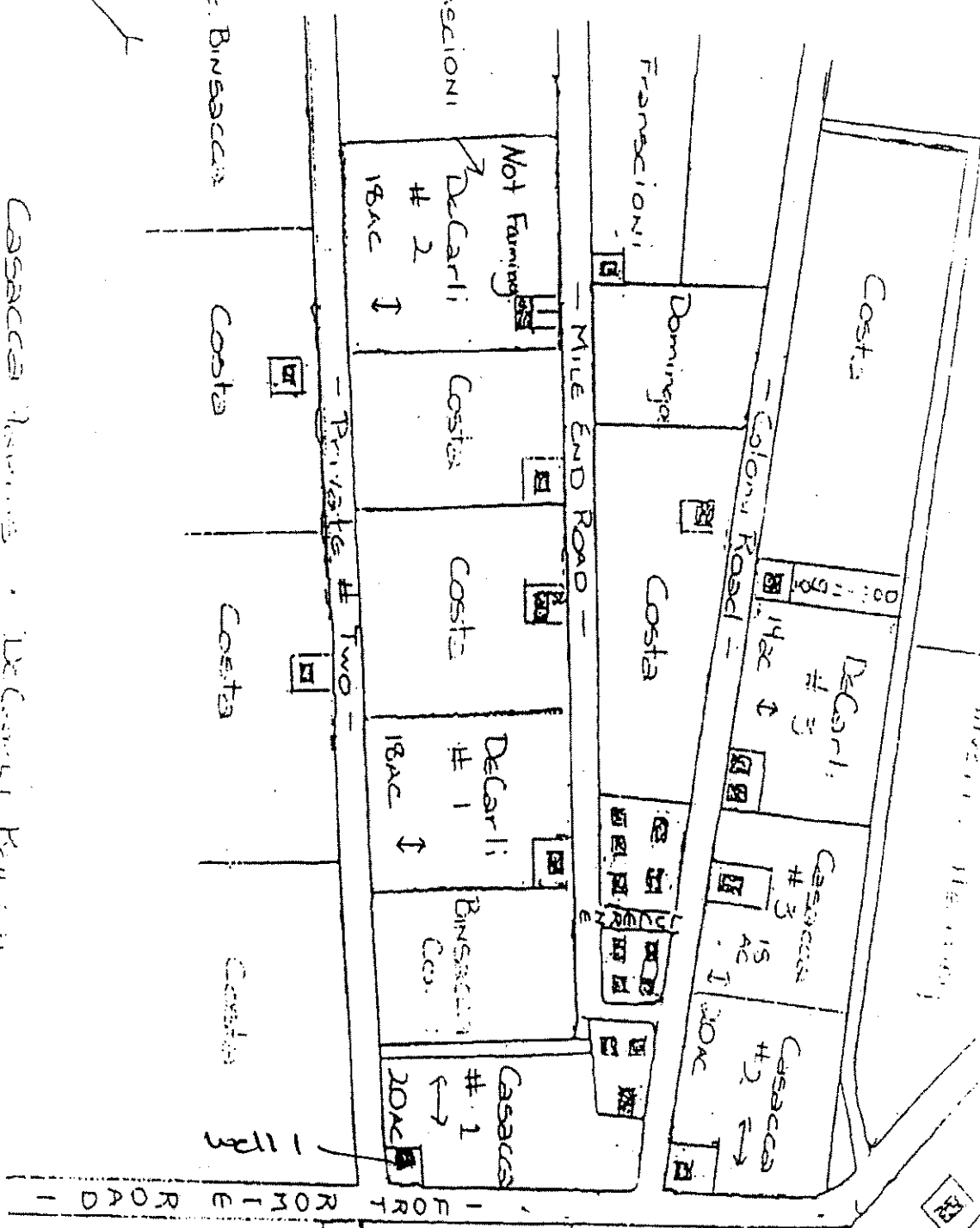
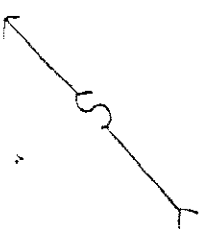
well #1 - NW
well #2 - self inactive
well #3 - NW
well #4 - NW

8.7
8.7
8.6

17
 32
 175
 084
 14

1997

Loc # 2 Casaccia - Home
 De Carli



Casaccia Home DeCarli Home

Locations # 2 + # 1

2793275030A

Well ← 1 man

1130

well 1 → All

well 2 → All

~~ISTRAGA RANCH~~

MARTIN RANCH

27-90-27K0100

23-135-110

12-10-57

136 AC

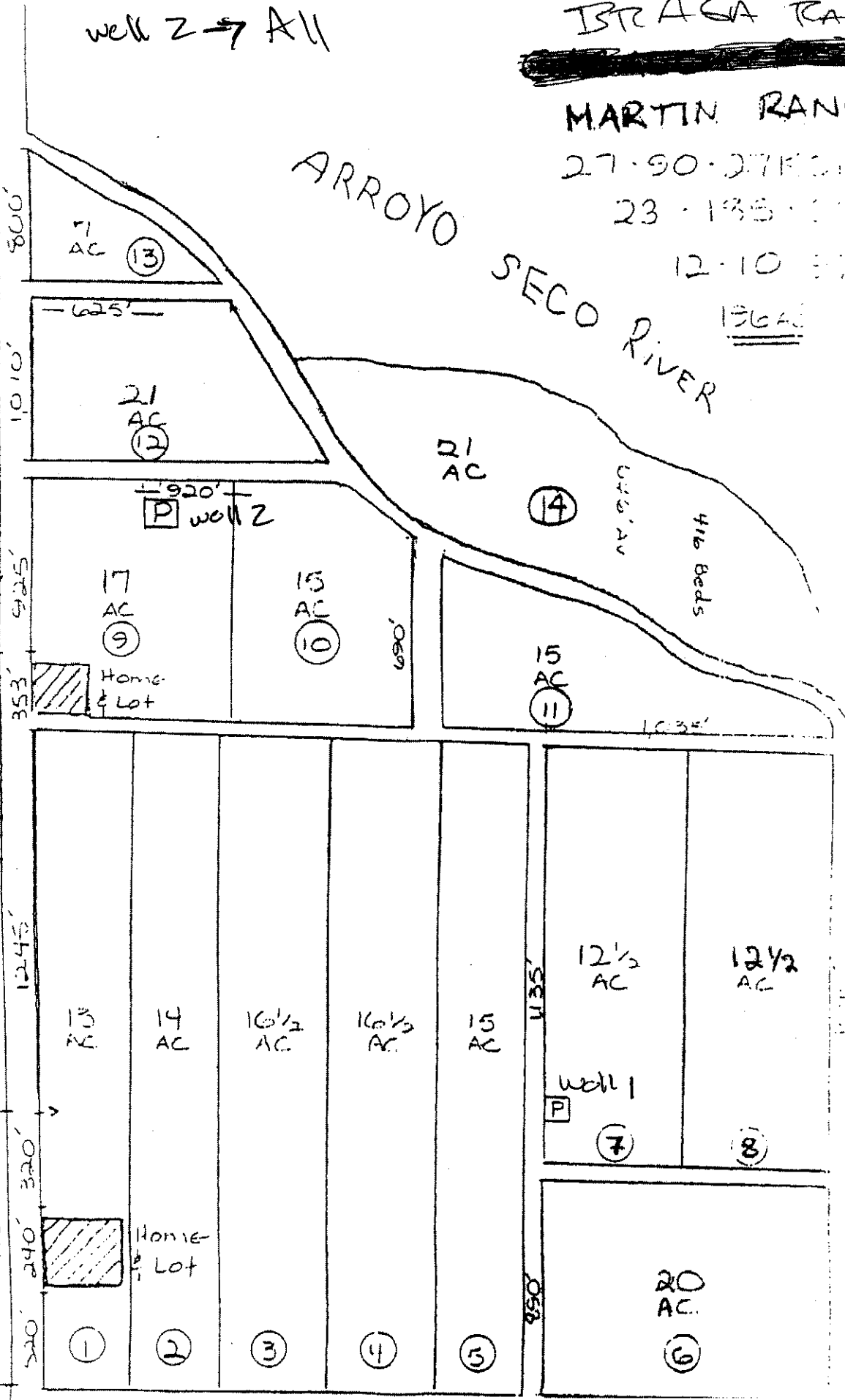
ARROYO SECO RIVER

DALE PHILLIPS ZABALA

CLARK & TOCNI

HUDSON RD

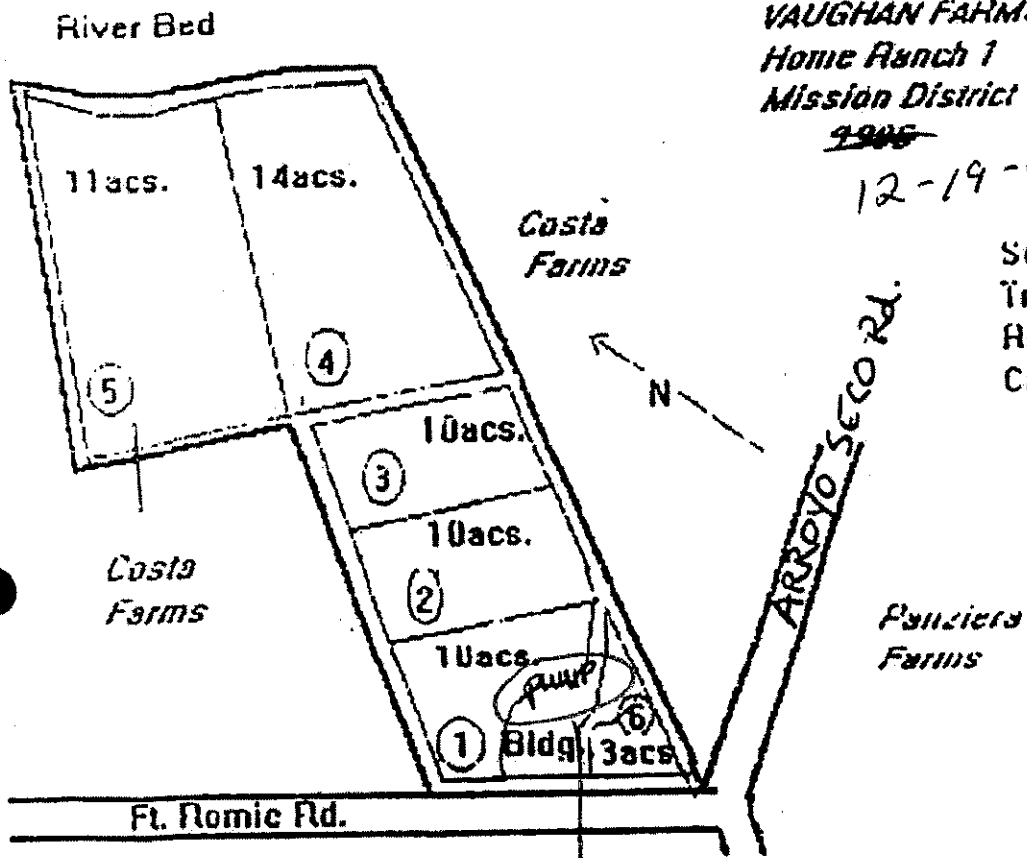
ED BLAIR RANCH



27-~~01~~⁰¹-27 K66.3A
VAUGHAN FARMS
Home Ranch 1
Mission District

~~4906~~
12-19-00

Sec. 5
Twp. 10S
Rng. 06E
Cnty. - Mty



well 1

well 6 → AU

MISSION Rd.

Los Cochis Farms

27-~~28~~⁰¹-27K063A

VAUGHLIN FARMS

Silliman Ranch 2

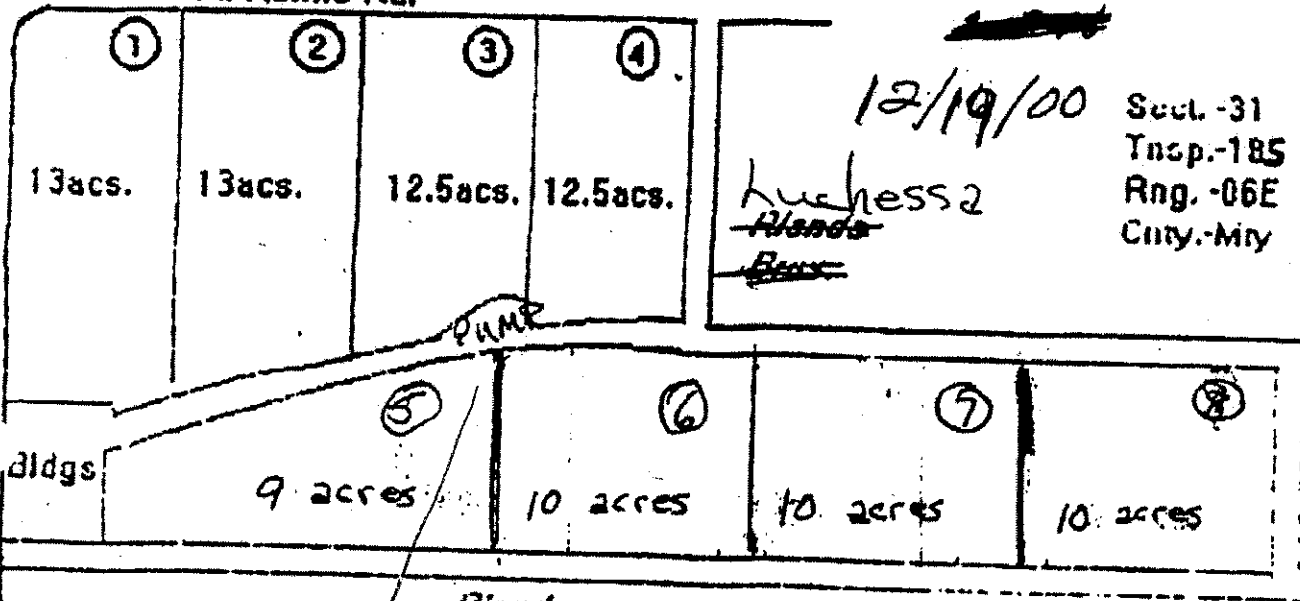
Mission District

~~1990~~

Ft. Romie Rd.

12/19/00

Secl. -31
Tnsp. -185
Rng. -06E
City. -Mry



Luchess2
~~Blonda~~
~~Bess~~

~~Blonda~~
~~Bess~~

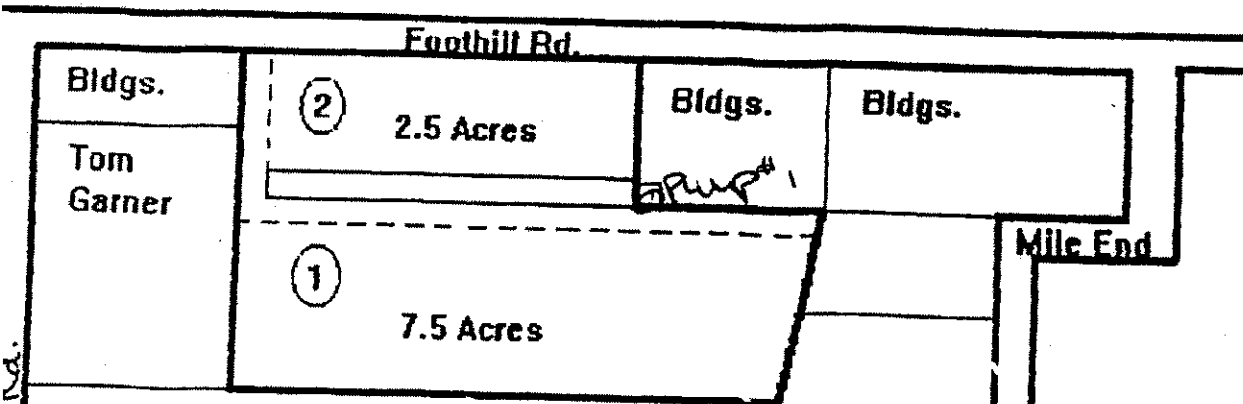
Luchess2

well 1

~~Spring Map~~

well 1 -> All

MISSION Rd. Ext.



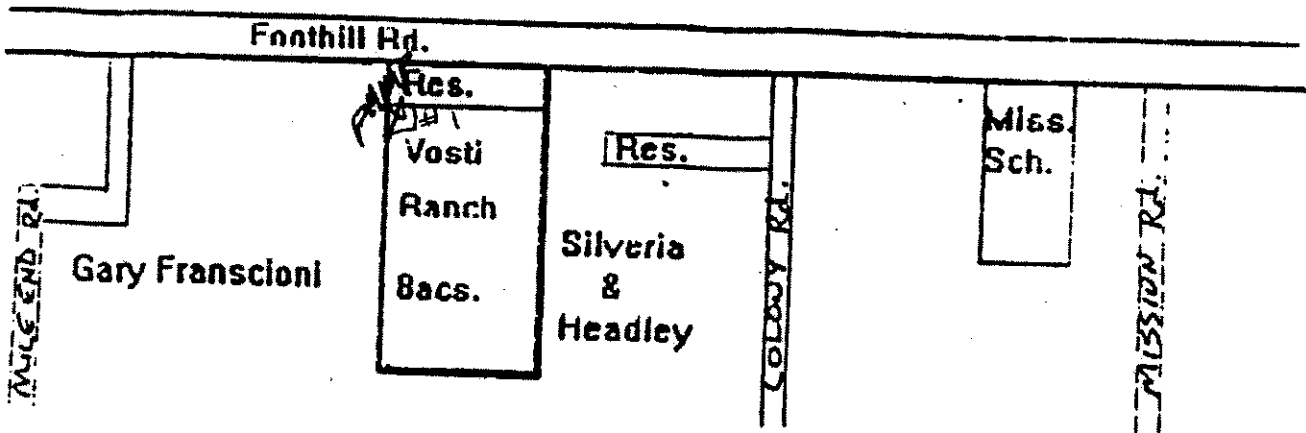
Gary Franscioni

VAUGHAN FARMS
 Binsacca Ranch 5
 27-⁰¹~~25~~-27 K063A
~~2-2-98~~
 12-19-00



Sec 7
 Twp 18S
 Range 6E

Well 1 → All



VAUGHAN FARMS

Vosti Ranch 3

Mission District

~~2000-55-16~~

27-⁰¹~~98~~-28K063A.

12-19-00

Sect. - 7

Twp. - 18S

Rng. - 06E

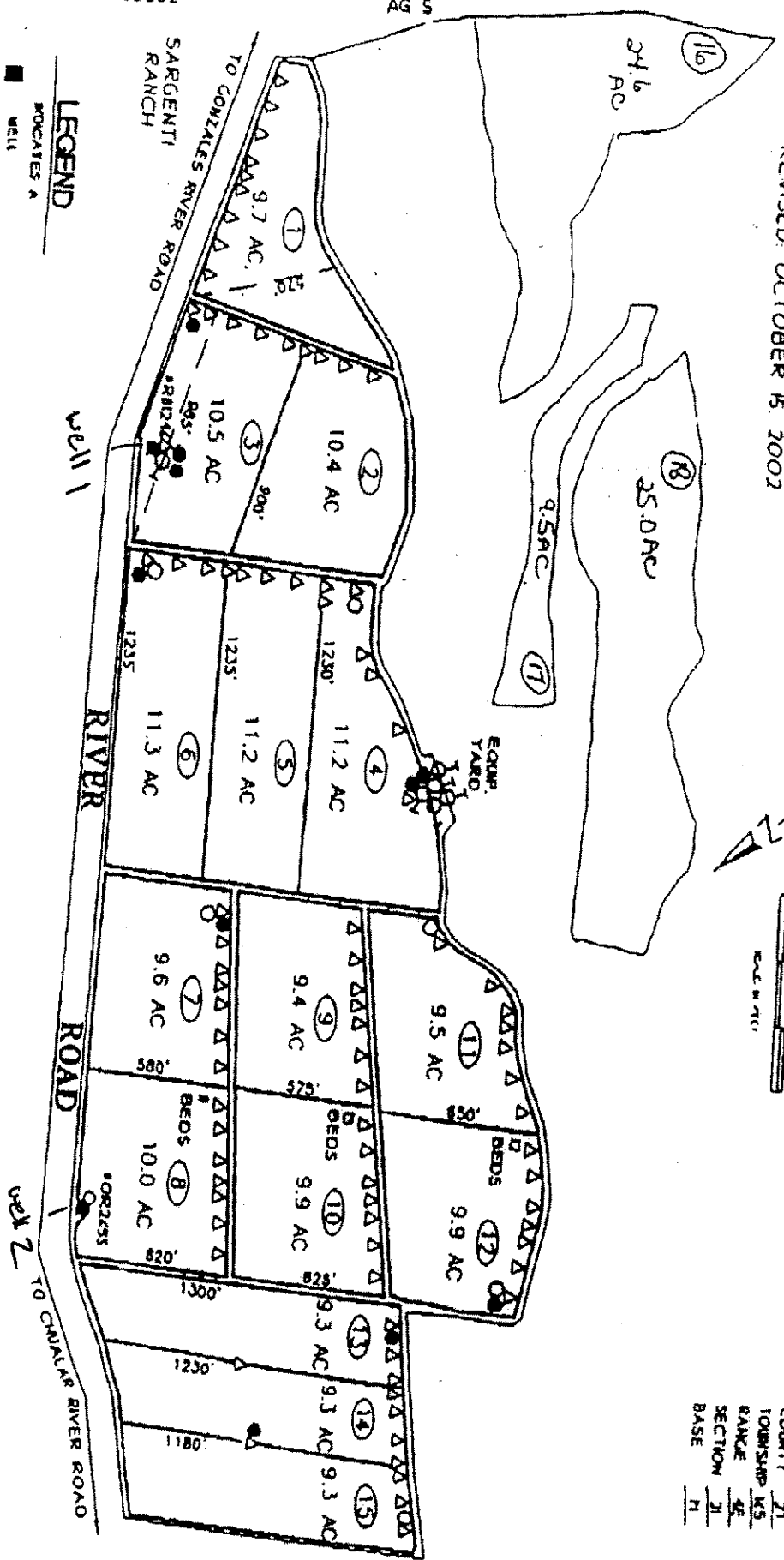
Cnty. - Mny

Well 1 → All

LUPI FIELDS HESS RANCH

MARCH 2000
AG SURVEYING, INC 1831455-1315
FILE: BOSAHSS.CCC BOSAHSS.DWG
VIEW: RANCH
REVISED: OCTOBER 15, 2002

COUNTY 21
TOWNSHIP K5
RANGE 4E
SECTION 31
BASE H



- LEGEND**
- well
 - ▲ HIGH PRESSURE VALVE
 - PRESSURE RELIEF VALVE
 - VACUUM BREAKER
 - GATE VALVE
 - STAND PIPE

well 1 → 7-15 for Spr + All for Farrow
 well 2 → 1-6 for Spr + All for Farrow

150.5± NET CROP ACRES
 158.1± GROSS FARMABLE ACRES

15